

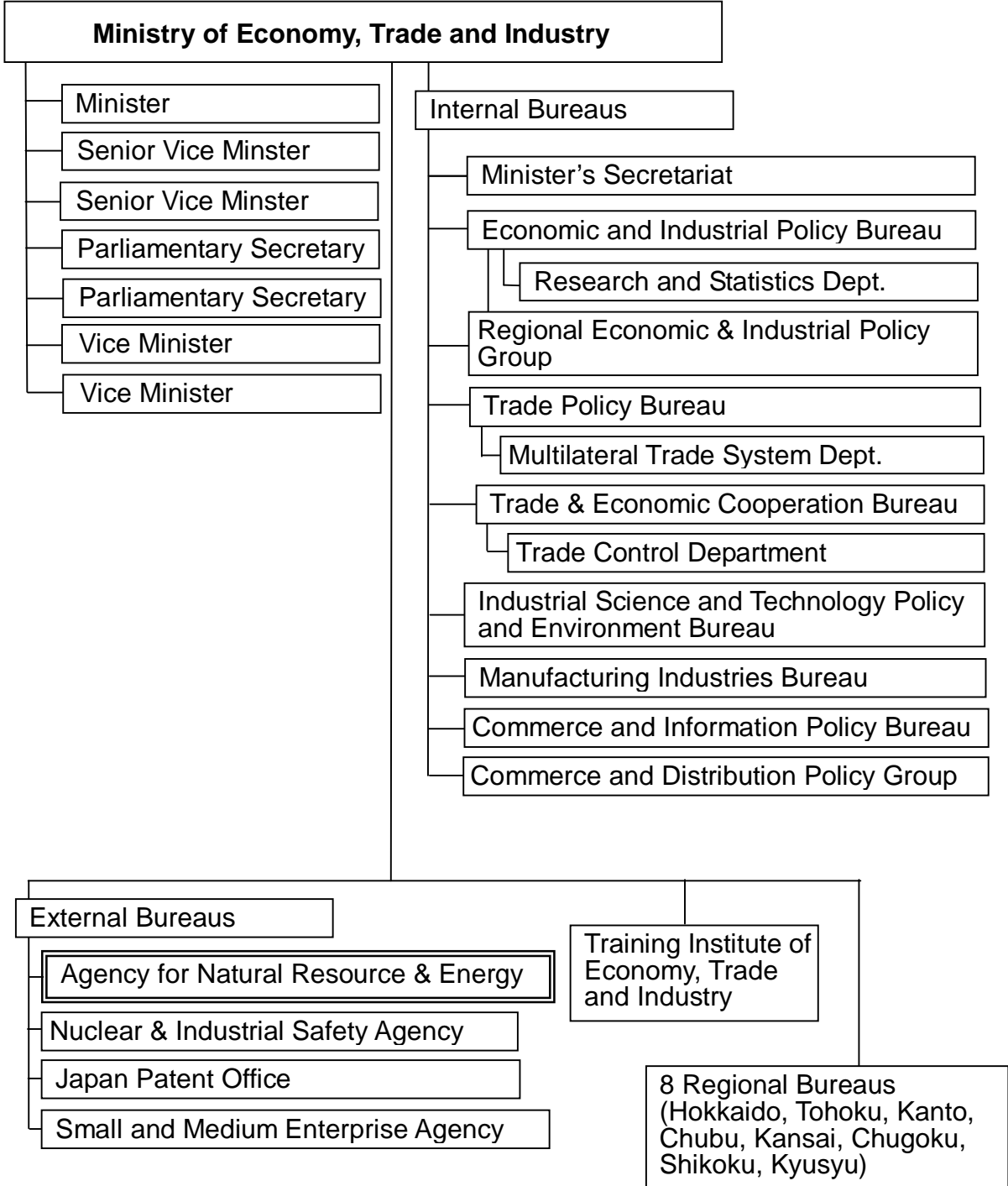
REFERENCE

1. RELATED ORGANIZATIONS

1.1 Ministry of Economy, Trade and Industry (METI)

(1) Organization of METI

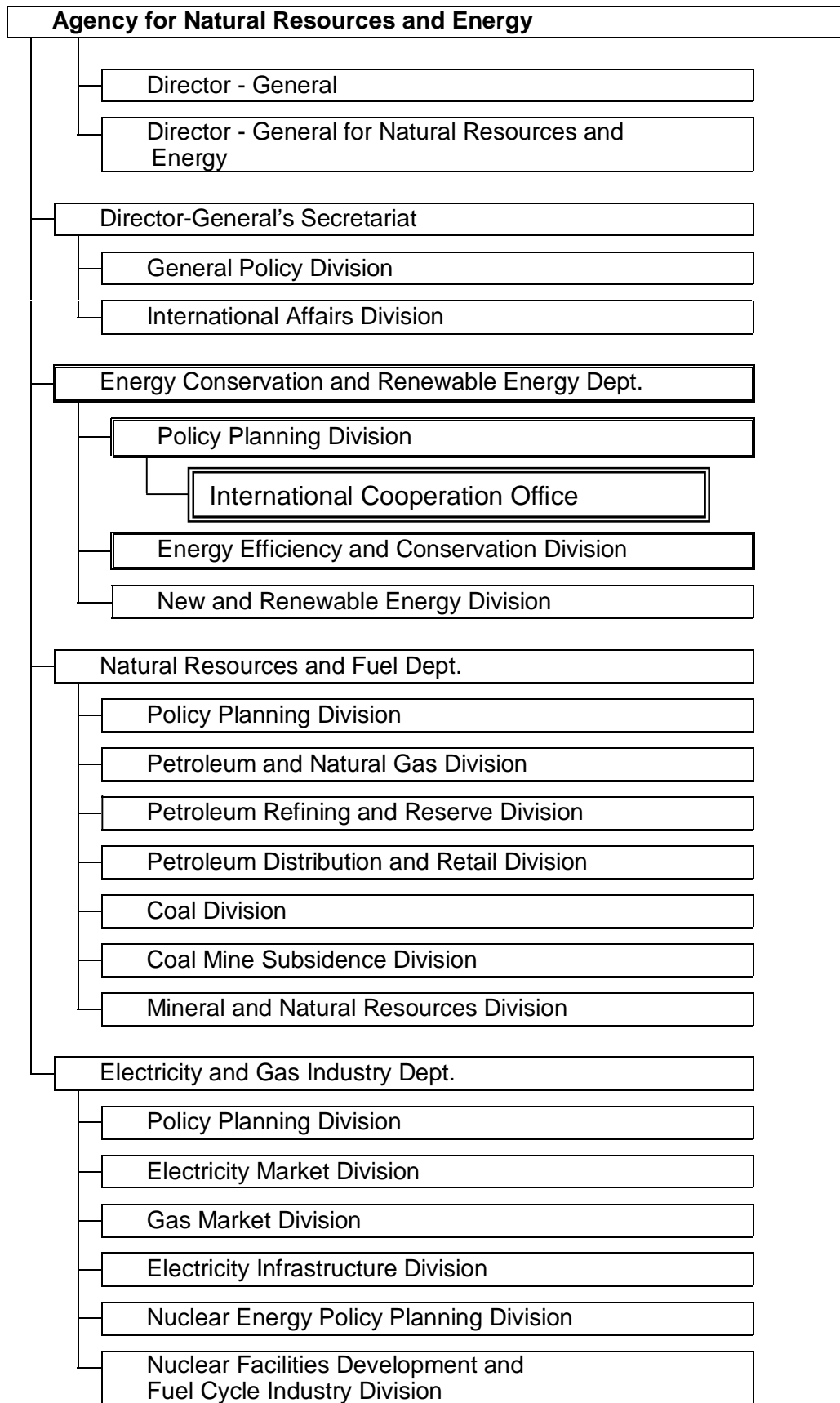
(as of September 1, 2008)



METI Website : <http://www.meti.go.jp/english/index.html>

(2) Organization of Agency for Natural Resources and Energy (ANRE)

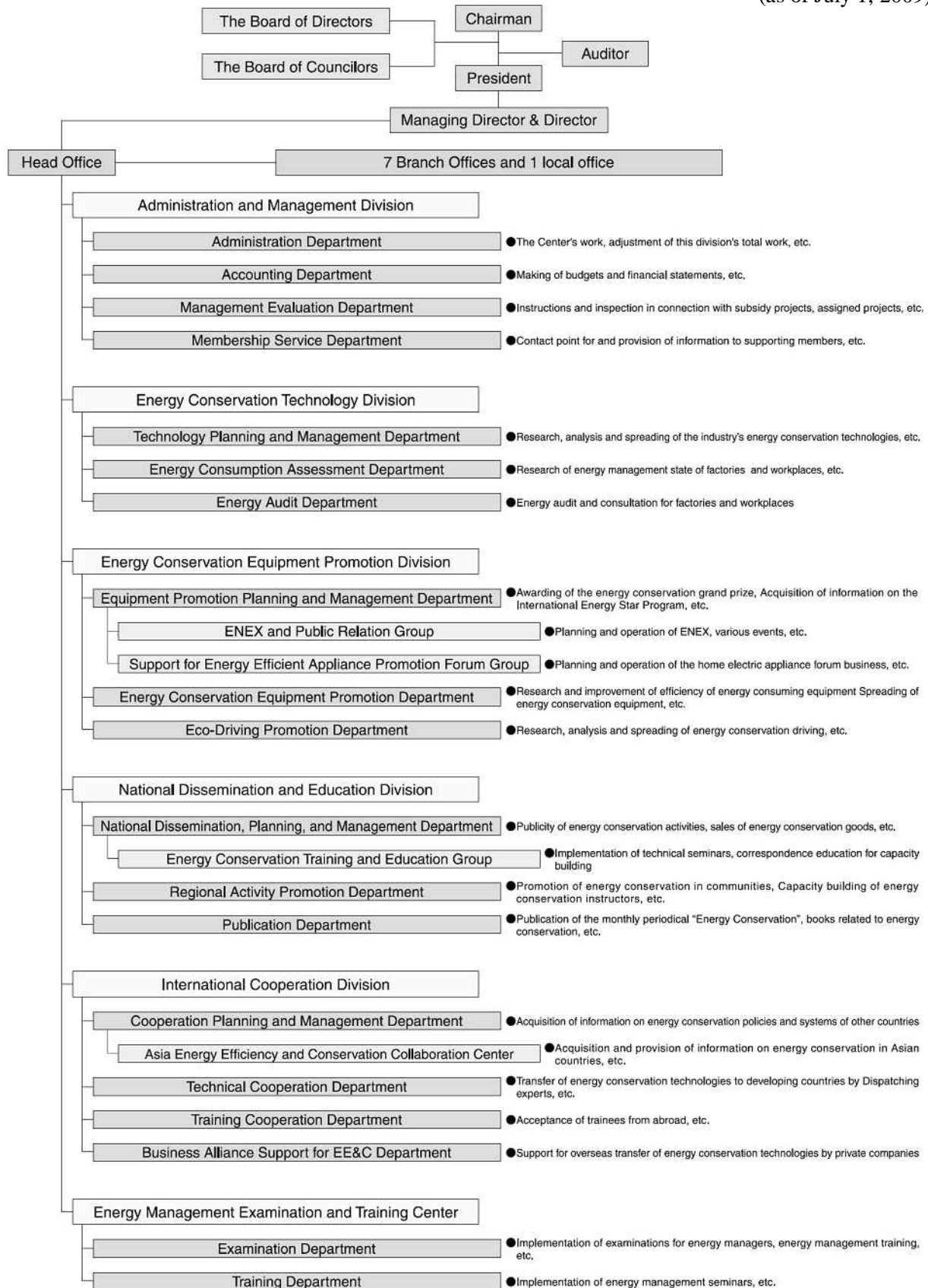
(as of September 1, 2008)



ANRE Website : <http://www.enecho.meti.go.jp/english/index.htm>

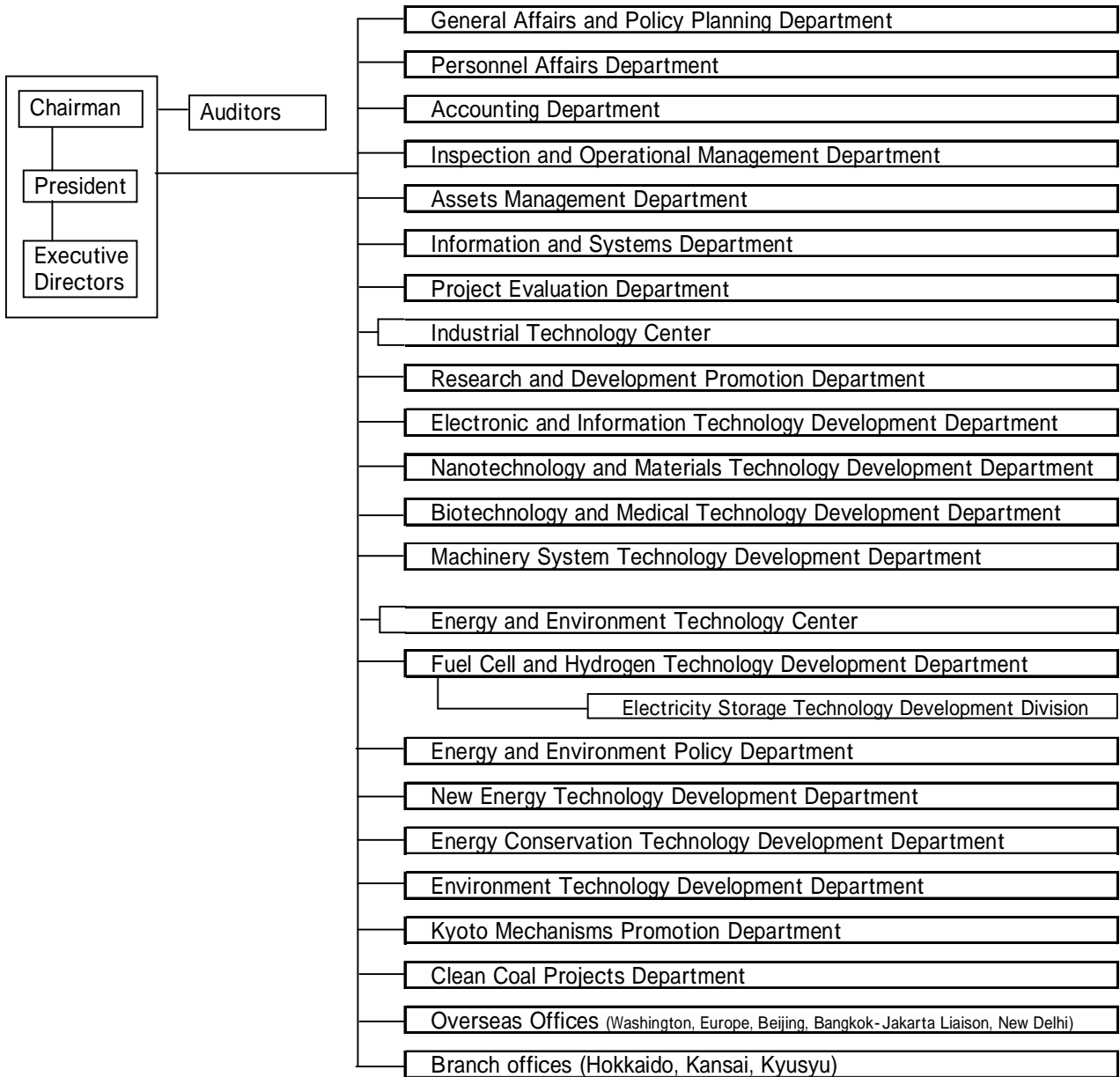
1.2 Energy Conservation Center, Japan (ECCJ)

(as of July 1, 2009)



1.3 The New Energy and Industrial Technology Development Organization (NEDO)

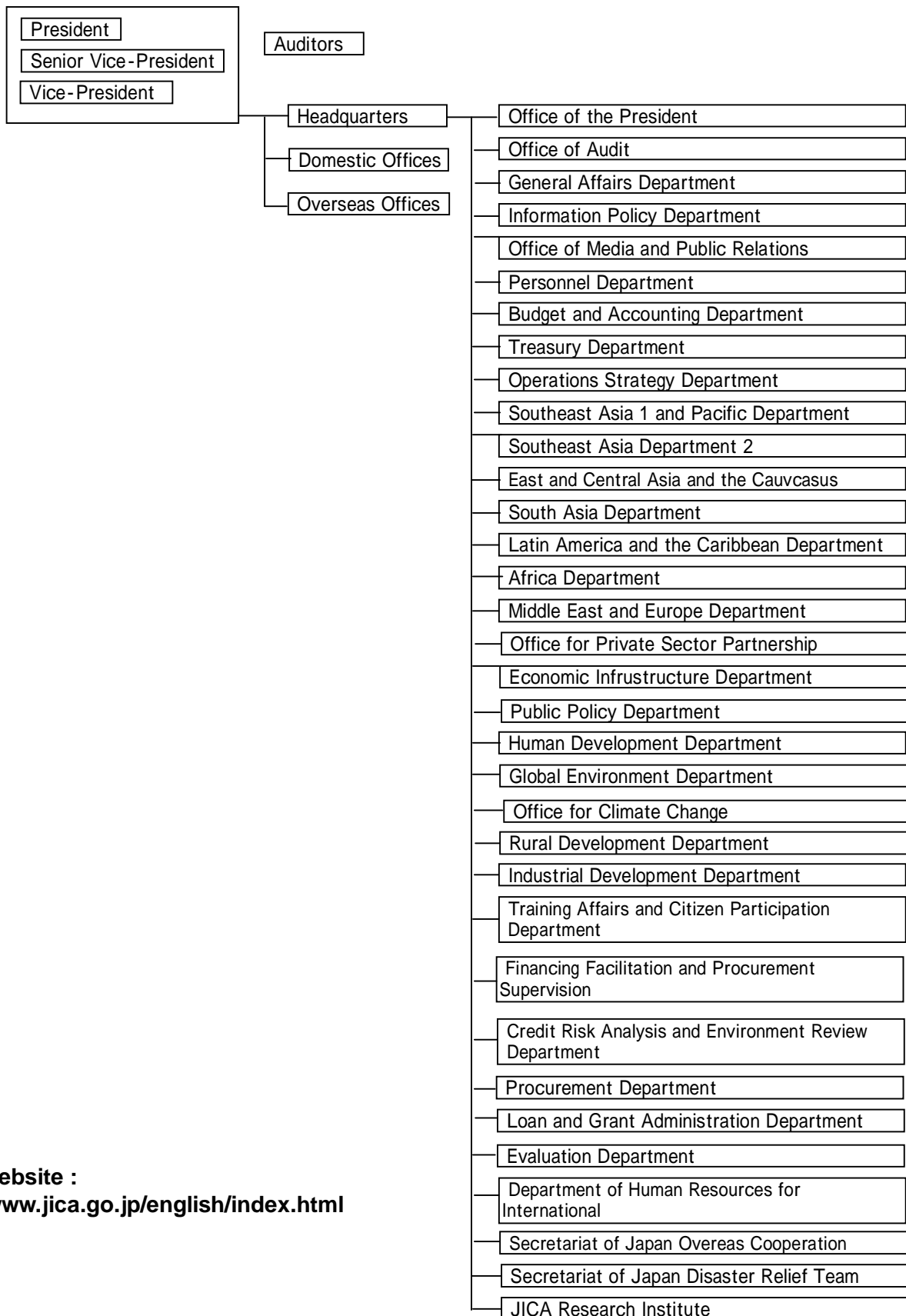
(as of August 17, 2009)



NEDO Website : <http://www.nedo.go.jp/english/index.html>

1.4 Japan International Cooperation Agency (JICA)

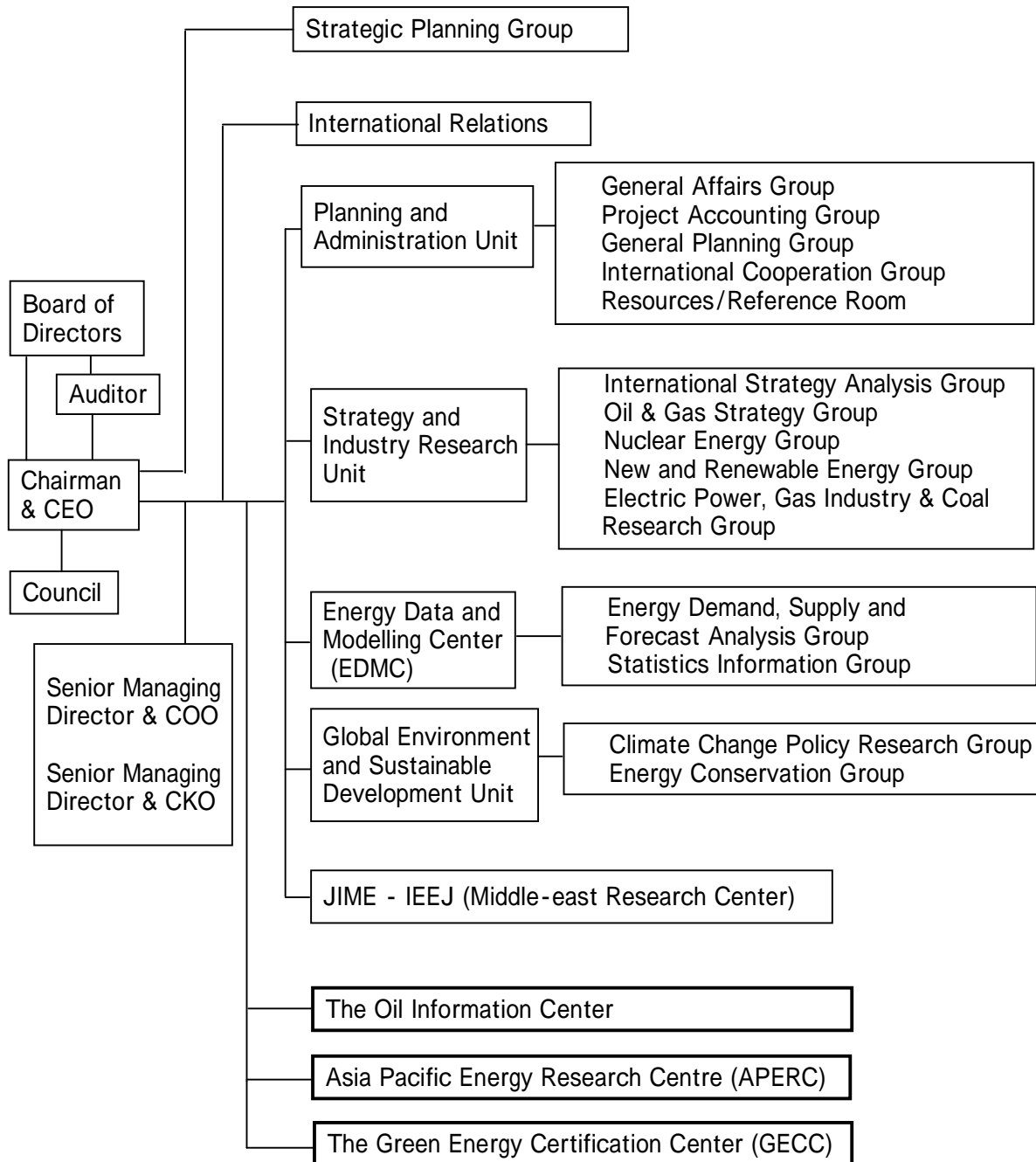
(as of October 1, 2009)



JICA Website :
<http://www.jica.go.jp/english/index.html>

1.5 The Institute of Energy Economics, Japan (IEEJ)

(as of October 1, 2009)



IEEJ Website : <http://eneken.ieej.or.jp/en/>