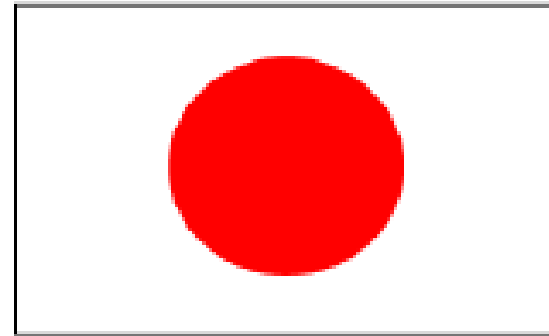


# Promotion of joint delivery using dolly-type double-connected trucks



**19th December 2023**  
**Toshiyuki MINEGISHI**  
**Technical Expert, ECCJ**  
**(on behalf of Senko Co., Ltd)**



ACE



METI



ECCJ

Copyright © 2007–2022 ECCJ. All Rights Reserved.

# Company Profile (1)

- ◆ SENKO Co., Ltd is a logistics company with 10 bases in ASEAN countries. (Thailand: 5 offices, Singapore: 2 offices, Myanmar, Vietnam, Cambodia)



ACE



METI

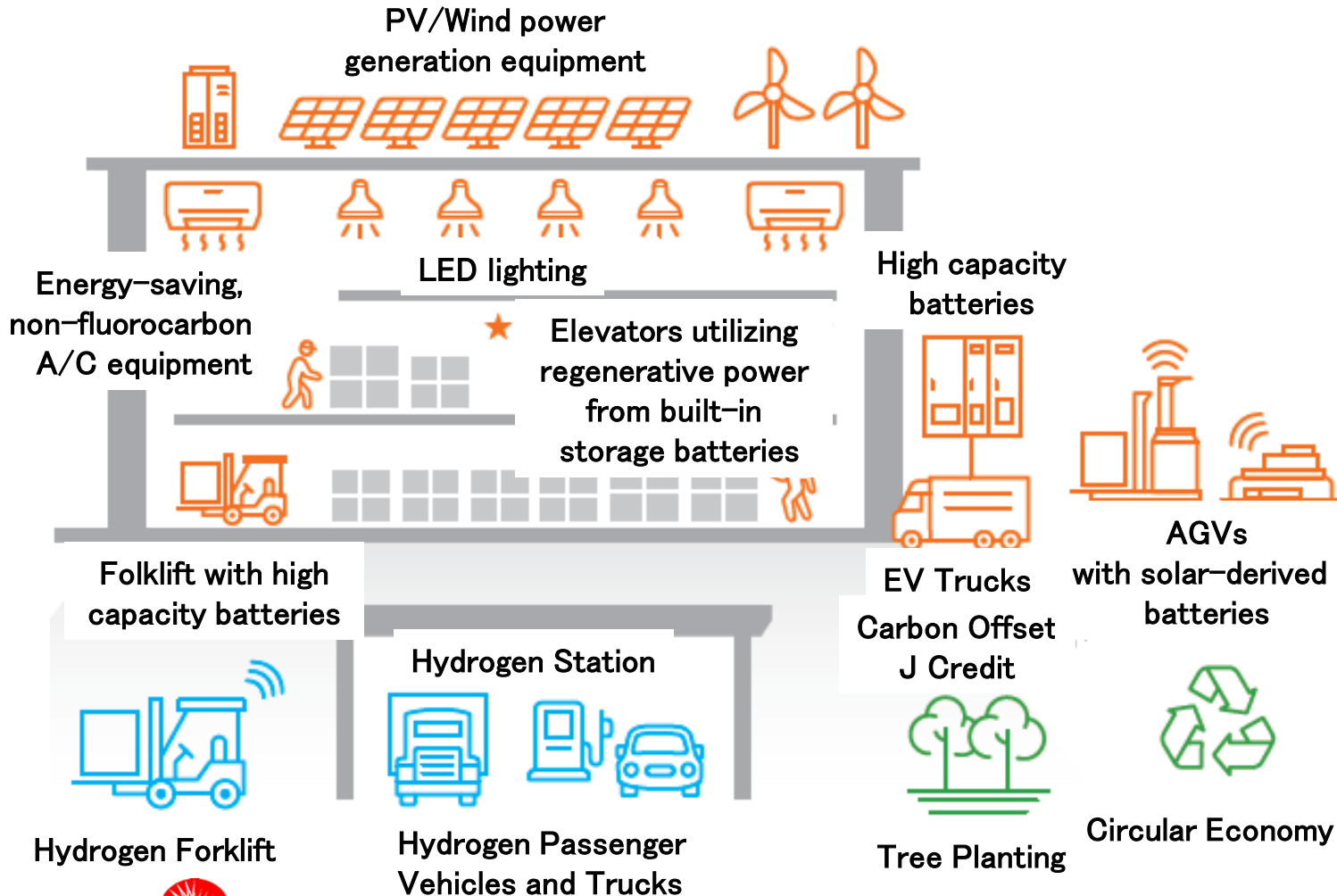


ECCJ

Copyright © 2007–2022 ECCJ. All Rights Reserved.

# Company Profile (2)

◆ We aim to become a CO2 zero logistics center by 2050 and contribute to building a sustainable society.



ACE



METI



ECCJ

Hydrogen Passenger Vehicles and Trucks

Copyright © 2007–2022 ECCJ. All Rights Reserved.

# Background of this project

- ◆ **Logistics companies have a greater social mission to take responsibility for their customers' Scope 3 decarbonisation/GHG emissions reductions.**
- ◆ **Land transportation using long-distance trucks, which emit particularly large amounts of CO emissions, it is necessary to strongly promote decarbonisation.**
- ◆ **The shortage of drivers is expected to accelerate due to the enforcement of the revised Labor Standards Law, which caps working hours for drivers (the 2024 problem).**



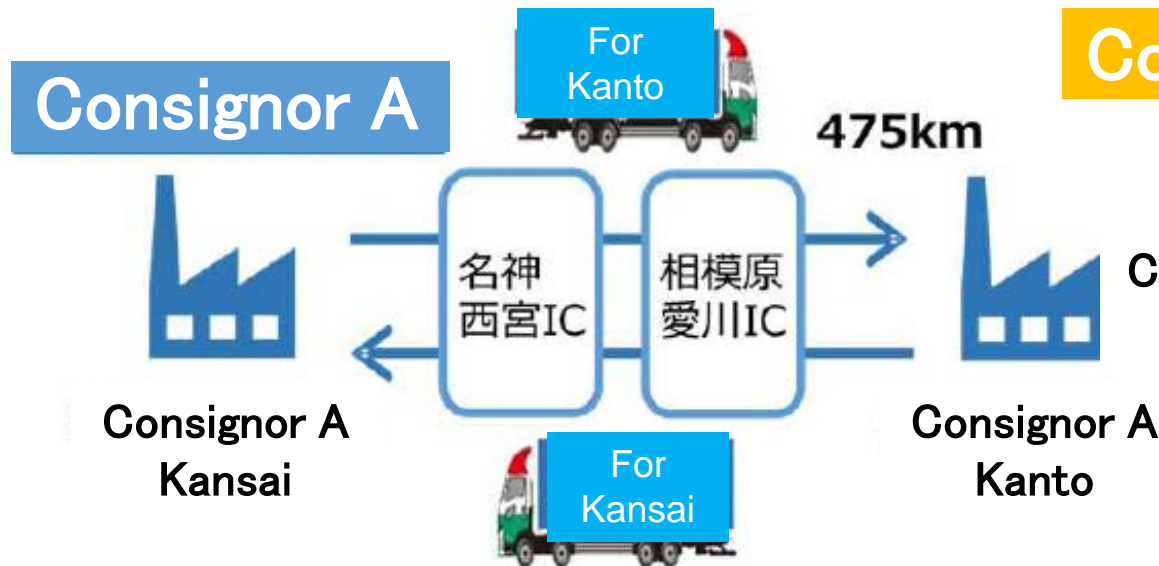
# Outline of the Project

- ◆ **Business enterprise(◎ : Representative)**  
◎ SENKO Co., Ltd、Consignor A、Consignor B
- ◆ **Outline of the project**
  - An agreement was reached with Consignor A and Consignor B, in March 2022, between the Kansai and Kanto areas, the two consignors began operating a “logistics bus with double-connected trucks,” incorporating joint trunk and relay transport between the two companies.
  - One truck can carry the equivalent of two large trucks, making it possible to make a significant contribution to decarbonisation and manpower saving.
- ◆ **Commendation: FY2022 Logistics Structure Reform Commendation (MLIT)**

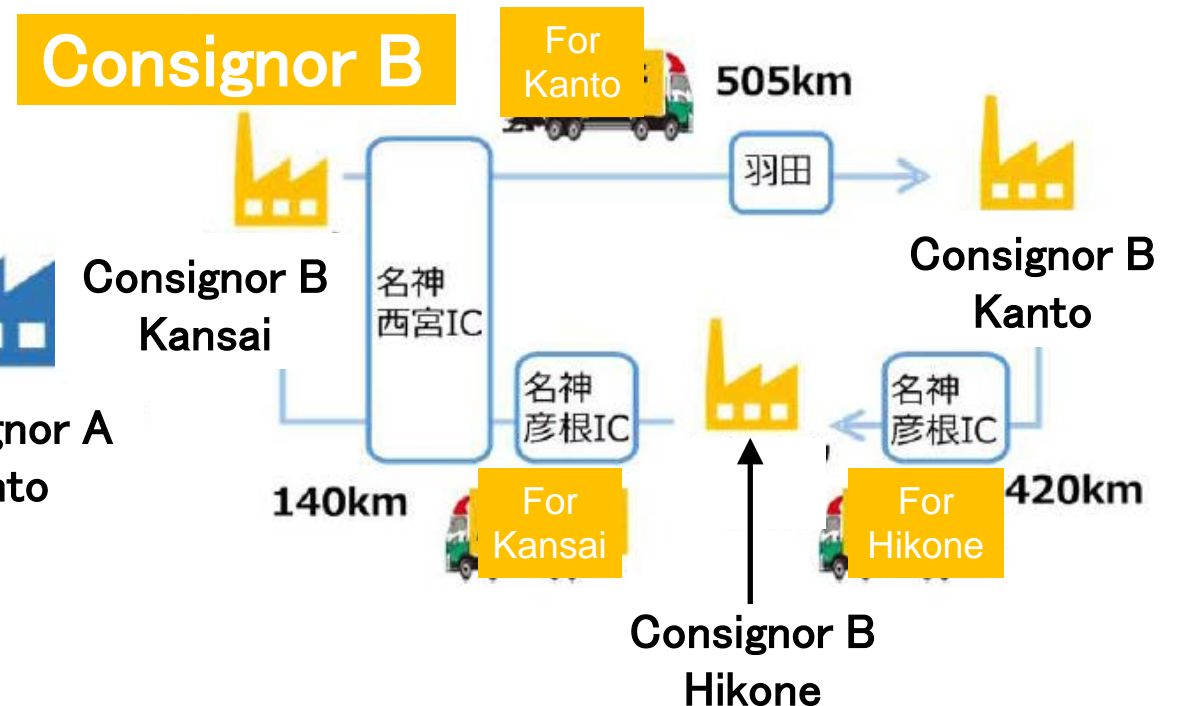
# Outline of the Project (before implementation)

- ◆ The two independent lines were operated separately.

[for consignor A]

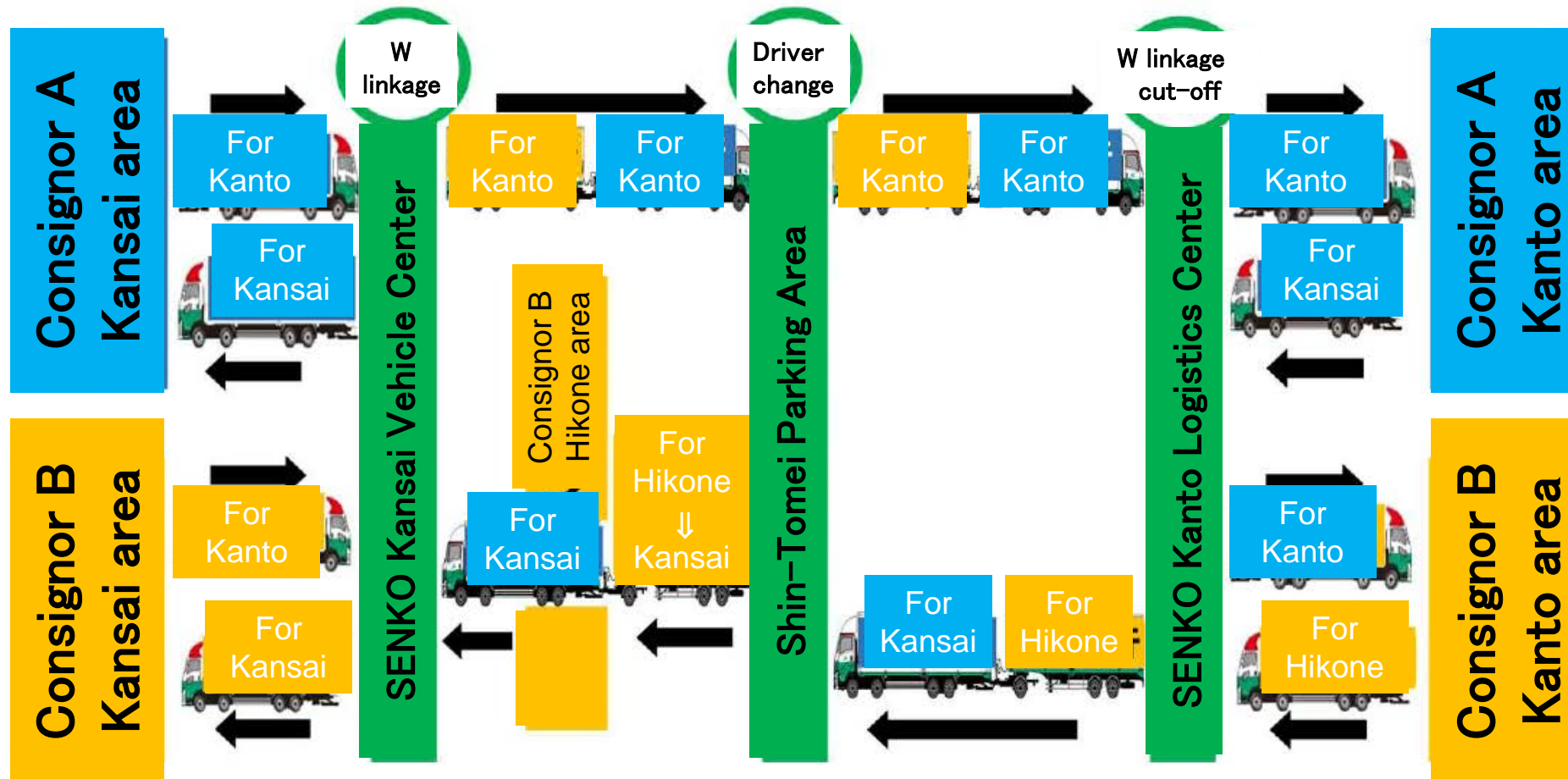


[for consignor B]



# Outline of this project (after implementation)

- ◆ Each of these two long-distance transports were consolidated.



# Outline of the Project (Effects)

- ◆ Long-distance trunk sections (expressways) are consolidated and operated by a single driver. From the disconnecting base, the truck is divided into two vehicles, a 10-ton truck and a semi-trailer, and semi-trailer vehicles to separate delivery destinations at the same time.



 **Japan's first trunk line transportation provided by SENKO**



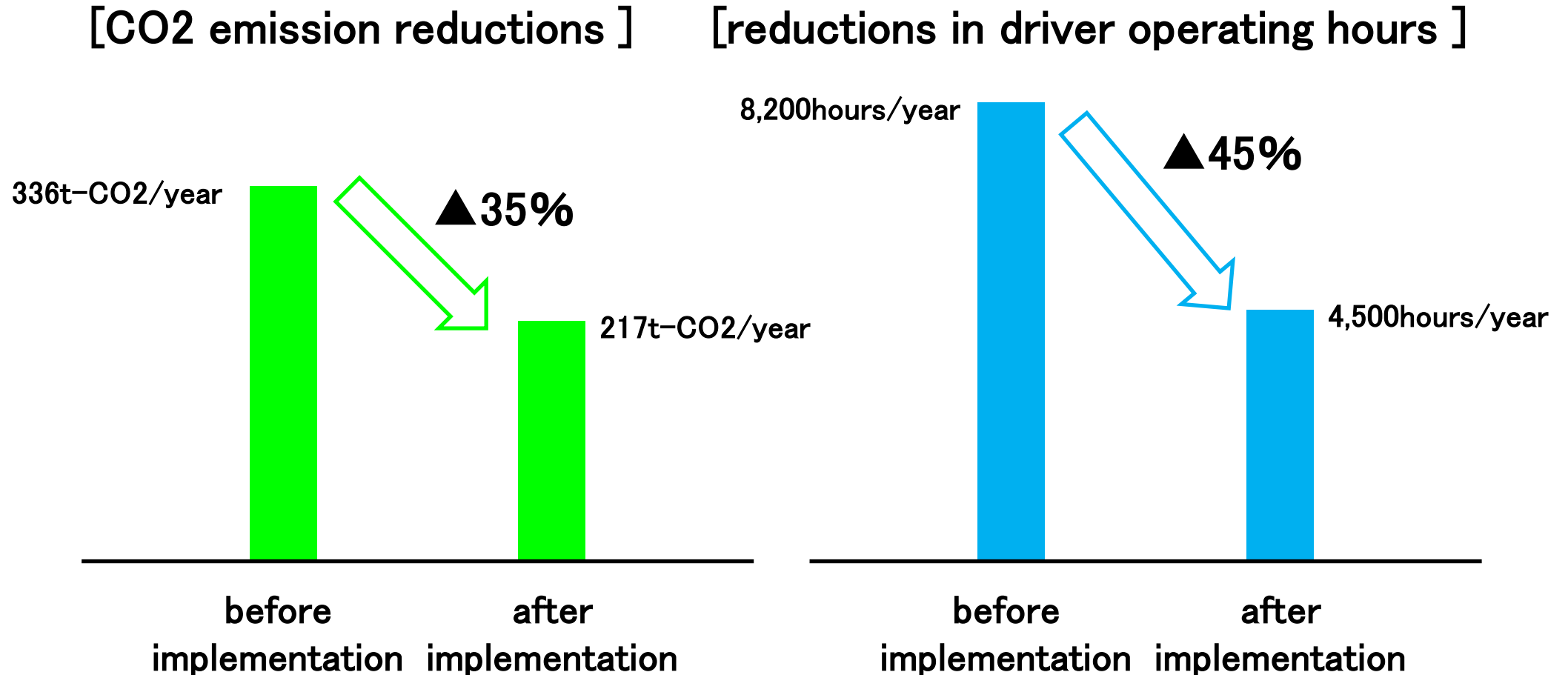
## Key points of this initiative

- ◆ **Two Consignors that are actively working to decarbonize their operations and reduce manpower have agreed to SENKO's "Double-Connected Bus" project, making it possible for them to jointly transport goods.**
- ◆ **Utilizing a dolly-type double articulated truck, the long-distance section (expressway) can now be consolidated and operated by a single driver, while two vehicles, a heavy-duty vehicle and a semi-trailer, can operate simultaneously from the disconnecting base to separate delivery destinations.**
- ◆ **By switching drivers at the relay base, it is possible to return to the direction of origin. This has enabled the company to improve its two-day operation to a one-day operation.**  
**This improvement enabled the company to respond to the 2024 problem and the revision of the Improvement Standards Notification.**



# Outcome of the Project

- ◆ CO2 emission reductions and reductions in driver operating hours are as follows.



# Future Initiatives

- ◆ We will continue to promote the double-connected truck business in cooperation with consignors, we will continue to promote the next generation of long-haul trunk line transportation.



*Thank you for your attention.*



ACE



METI



ECCJ

Copyright © 2007–2022 ECCJ. All Rights Reserved.